

HOW TO SUBMIT DIGITAL IMAGES FOR GSCCC COMPETITION

The source of the image can be any scanned photo, negative, 35mm slide or a digital camera.

Preparing The Images

If you want to save the original image, make a duplicate to use for resizing, and for submitting.

These instructions remain the same for every digital image you submit to Pictorial, Nature, and PJ.

- 1) Open file in Photoshop or Elements. Go to **Image> Image Size** (note: in some versions of Elements, go to **Image>Resize>Image Size**)
- 2) Check the box **Resample Image**.
- 3) Resize your final image to a maximum of either 1024 pixels WIDE and/or 768 pixels HIGH. Width or height may be LESS, but not more than these maximums.
- 4) Click **OK**. Image will now fit into 1024 x 768 dimensions or less.

NOTE: Ignore what happens in the Document Size box. It only applies when you want to print. It does not apply when you change pixels dimensions.

NOTE: Be aware that images with a vertical orientation must still not exceed 768 pixels high, and thus, your horizontal will be much less than 1024 pixels wide. This does not affect quality of projection.

EXAMPLE OF IMAGE SIZING:

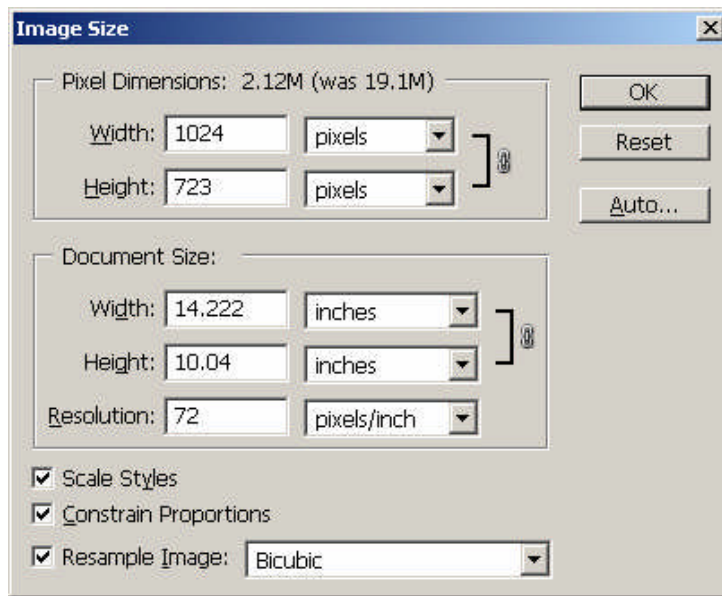


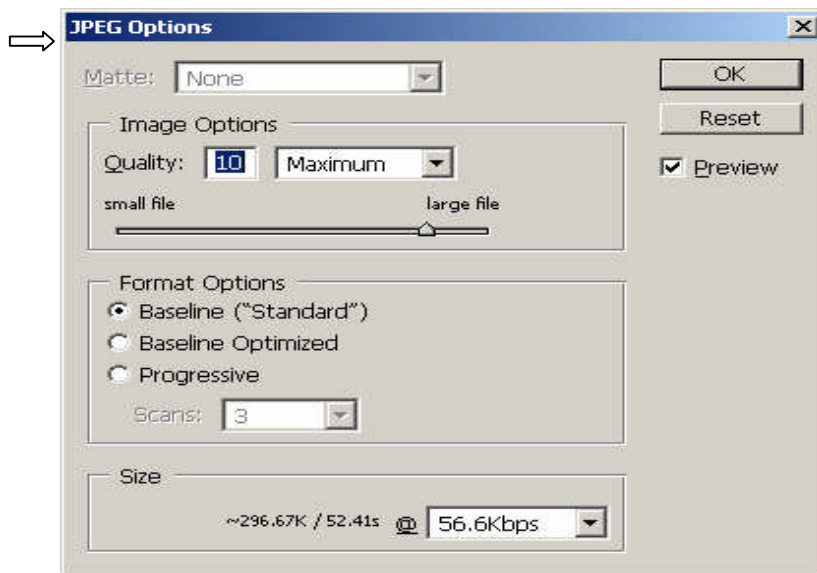
Image is now ready for the next step.....

5) File Sizing Format:

a) Under **File> Save As**

Enter the file name beginning with your last name followed by title.
(ex. AVERY- africa landscape.jpg)
Please use caps for your name and lower case for image title.

b) Choose JPEG ...SAVE. A box will open titled **JPEG Options**.



c) under **Image Options**:
choose **Quality 10, 11, or 12.**

d) under **Format options**: choose **Baseline.**

Click **OK** and THIS IS THE FILE YOU WILL SUBMIT.

CHECK YOUR IMAGE to be sure the image you now have is a **JPEG file and image dimensions fit within 1024 pixels WIDE and 768 pixels HIGH.**

DO NOT CONFUSE THE IMAGE PARAMETERS WITH ANY **PRINTING PARAMETERS. THEY ARE NOT RELATED!**

Submit Digital Images to Your Club's GSCCC Representative

- 1) Burn file or files on a CD.
- 2) On CD write CLEARLY:
 - a) Month entered (July, Aug, etc.)
 - b) Division: Pictorial, Nature or PJ. One CD for each division.
DO NOT MIX DIVISIONS ON ONE CD.
 - c) Print your name and image titles on CD and submit to club representative.

GSCCC Representative Submits Digital Images for Competition

- 1) Collect all the CDs from your members for each division to be entered
- 2) Select the images you want to submit to the competition and copy them to the hard drive on your computer.
- 3) Add an entry number (1,2,3, or 4) and your clubs initials, acronym, or short name in all caps to the front of the file name.

Examples:

The 1st image from the Dallas Camera Club could be named

1-DALLAS-AVERY- africa landscape.jpg

The 3rd image from the Greater San Antonio Camera Club could be named

3-GSACC-EMRIE-red flower.jpg

The 2nd image from the North Louisiana Camera Club could be named

2-NOLOCAM-WALLACE-sunset.jpg

The number on the image must correspond with the number listed on the *Entry Form* "D", which must accompany each club's entry.

- 4) Burn the selected and renamed files to a CD
- 5) On the CD write CLEARLY:
 - a) Month entered (July, Aug, etc.)
 - b) Division: Pictorial, Nature or PJ. One CD for each division.
DO NOT MIX DIVISIONS ON ONE CD.
 - c) Print your club's name and image titles on CD
- 6) Mail the CD along with the rest of your slide or print entries to the judging club.